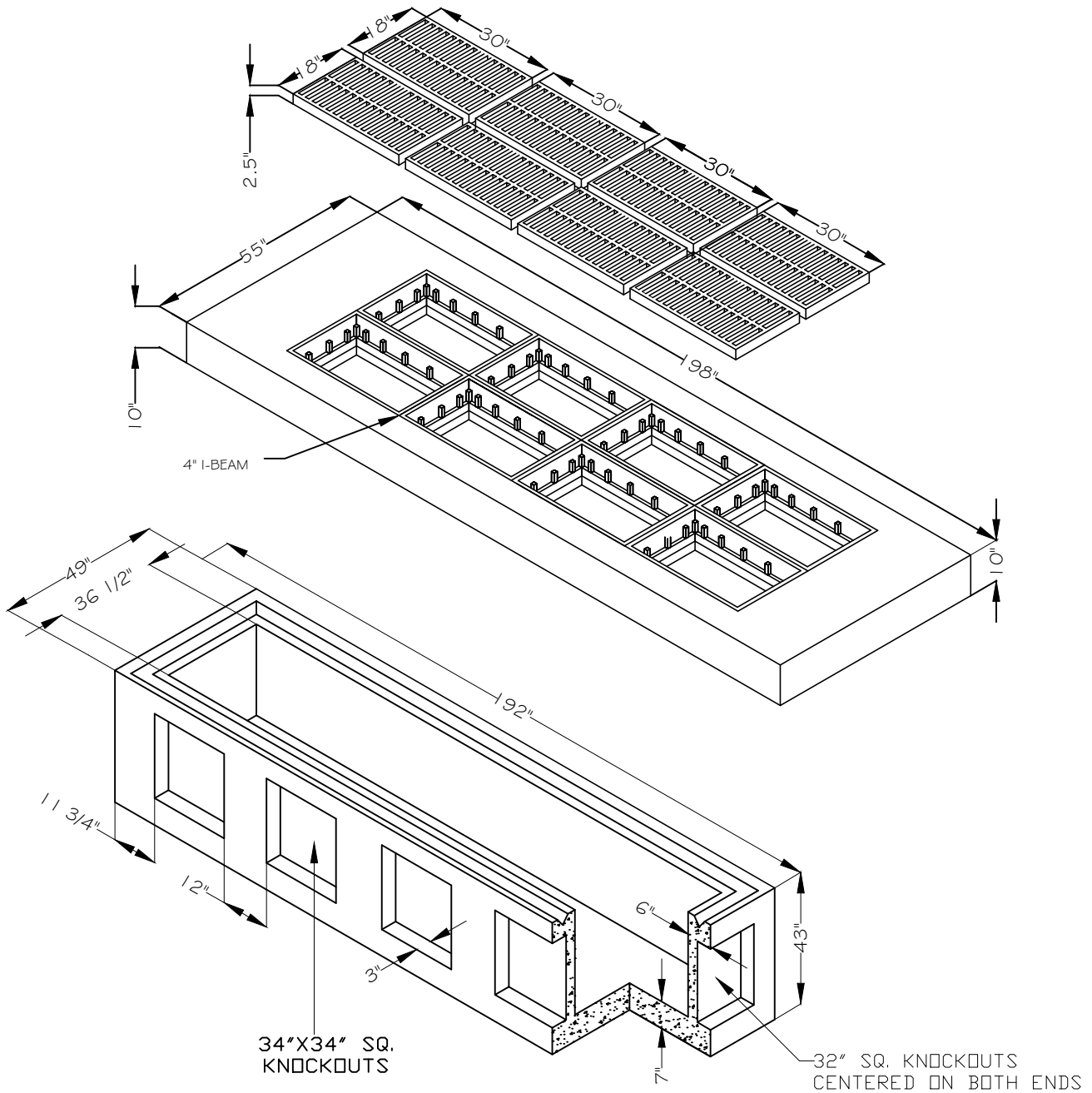


Specifications:

1. Concrete: Has a Design Strength of 5,000 psi at 28 Days.
2. Steel Reinforcement: ASTM A-615, Grade 60 or ASTM A-497 Welded Wire Fabric.
3. Loading: Designed for H2O Loading.



**The Turner  
Co.**

DRAWN BY: RTH	JOB NO:	DATE: 11/16/2012
CUSTOMER & PRODUCT		
<b>8 GRATE INLET</b>		

JOB NAME: